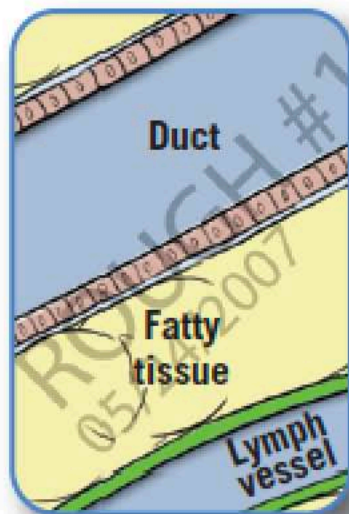


What is breast cancer?³

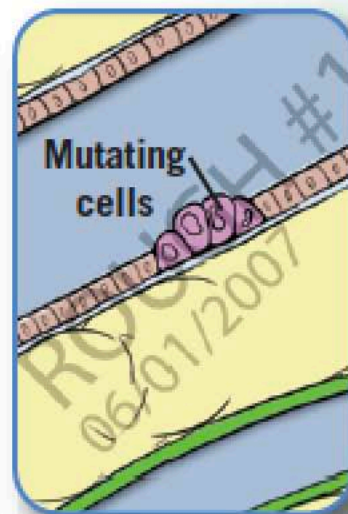
- Most cells in the body have genetic material called DNA
- DNA tells the cells what to do and when to do it
- Sometimes the DNA can change, causing the cells to grow out of control
- This can be caused by inherited genes, certain viral infections, exposure to UV sunlight, tobacco, diet, chemicals, radiation, and other factors

Cancer cells keep growing even when they are supposed to stop. Since they don't know when to stop, they can keep growing, forming a solid tumor.

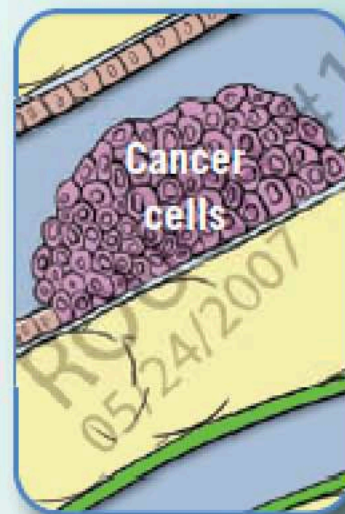
As cancer continues to grow out of control, it can reach the bloodstream and/or lymph system and spread to other parts of the body. When this happens, it is called metastasis⁴ (me tas ta sis).



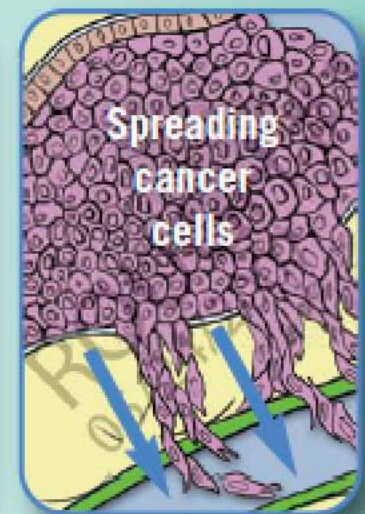
Normal cells



Cells
mutating



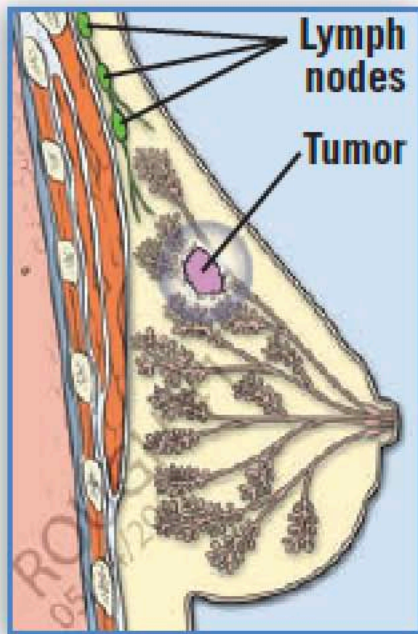
Cells
out of control



Metastasis

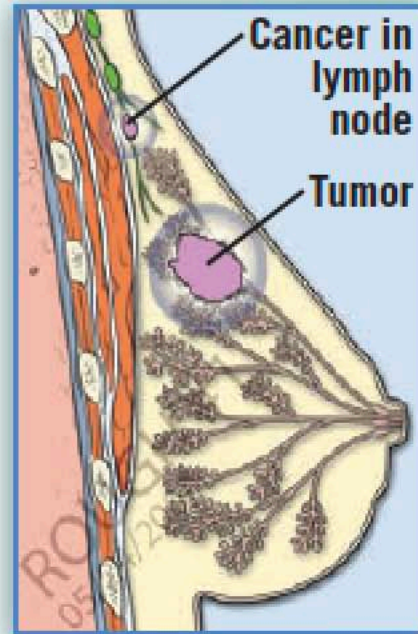
Stages of breast cancer⁴

The different stages of breast cancer describe the seriousness of the cancer.



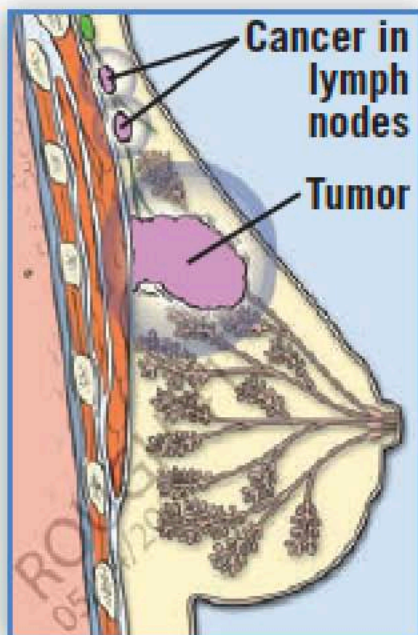
Stage 1

- Tumor size 2 cm or less
- No spread to lymph nodes
- No metastasis



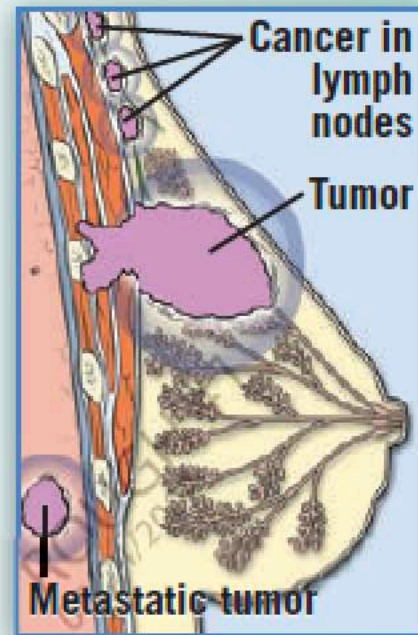
Stage 2

- Tumor size 1 to >5 cm
- Possible spread to lymph nodes
- No metastasis



Stage 3

- Tumor size 1 to >5 cm
- Spread to lymph nodes
- No metastasis



Stage 4

- Tumor size 1 to >5 cm
- Spread to lymph nodes
- Metastasis